

## Encoder & IPTV Streamer with HD-SDI Input



### h.265 and h.264 encoder & IP streamer as boxed or 19" 1RU

- HD-SDI or SD-SDI input for encoding
- Stereo Audio embedded or external Input (3.5mm stereo)
- HD Resolution 1080p, 1080i, 720p
- IP output: RTSP, RTMPs, UDP/RTP, HTTP, HLS, FLV, SRT
- Distribution of Video Camera HD-SDI and other sources content over LAN, WAN or internet.
- 2 simultaneous and independent Live stream broadcast encoder engines to multiple destinations
- Video-over IP applications (Studio signal distribution)
- IPTV/OTT applications
- Video conferencing, Camera streaming
- IPTV on LAN applications, Corporate IPTV for Broadcasters
- HD and SD video encoding (incl. 1080p)

### Complementary products:

- HSD-340 HDMI to SDI converter
- HDD-275 Decoder IP to 4K/HDMI/HD-SDI/VGA/CVBS outputs
- IPTV Set Top Box 6600+ or 7500+
- IPQAM-801: 8 service UDP/RTSP to 1 ch. DVB-C Modulator
- HDC-5016: 512 IP to 16 DVB-C channels

*BLANKOM SDE-(1)265 encoder serves the distribution of SD and HD TV/video content through IP networks in digital quality.*

*The live video can be received by Internet media server by TV sets with IPTV Set-Top Boxes, on PC's and tablets with VLC Player.*

### BLANKOM SDE-265 & SDE-1265

**IPTV encoder is designed for TV signal distribution in excellent quality over LAN and INTERNET.**

**The h.265 (HEVC) compatible compression technology features low-latency and low bit rates for IPTV/OTT systems. The high-efficient encoding chips saves bandwidth cost through all its resolution range.**

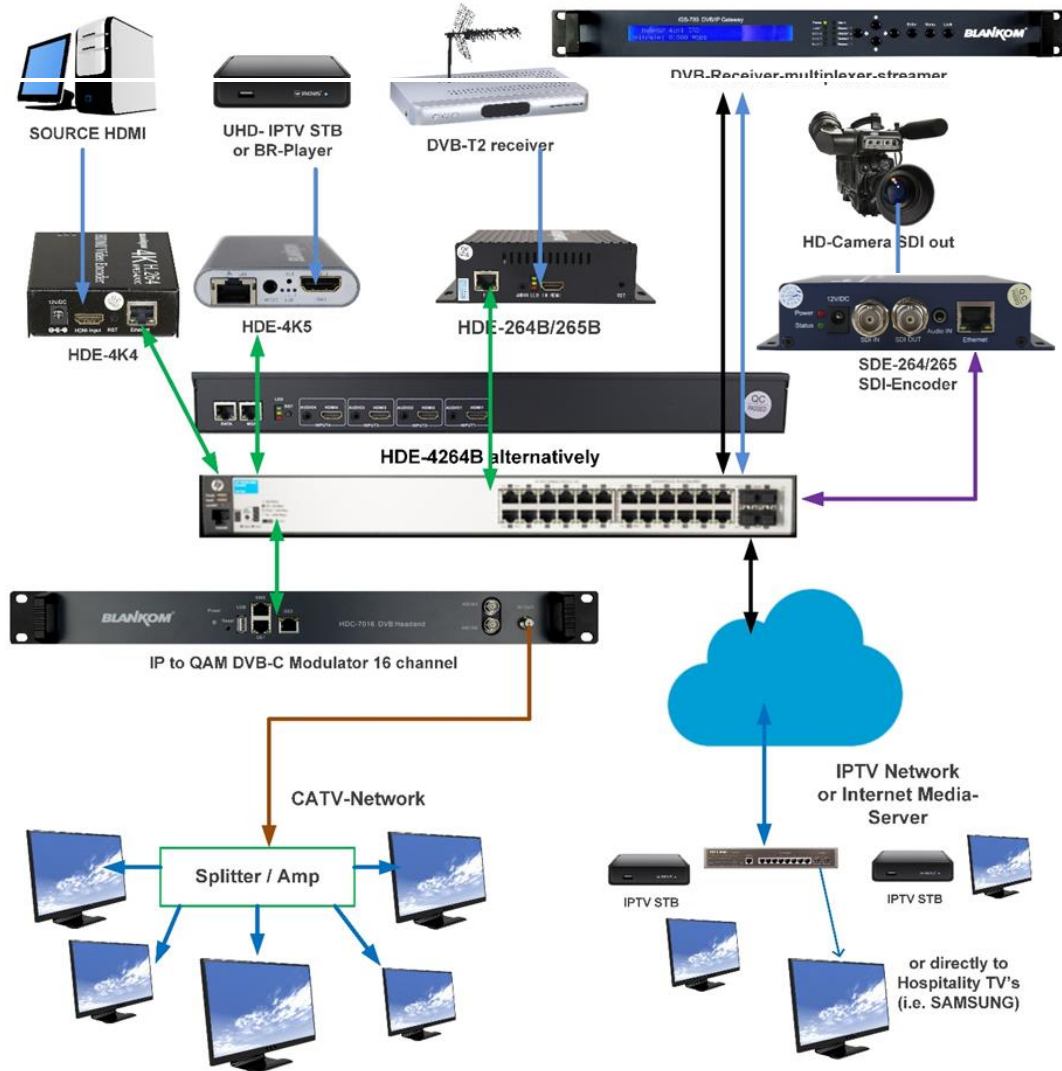
**Distribution of SD and HD TV channels through the IPTV/OTT network using state-of-art IP technology from almost any kind of video input.**

**Excellent video and audio quality. High reliability. No regular service and maintenance need during operation.**

Remark: SDE-264 is not available any more

# Application Example

Multiple Encodings to IPTV and CATV



Function	h.265 (HEVC compatible) and h.264 (MPEG4 compatibel) Encoder and IP Streamer
INPUT	HD-SDI / SD-SDI (BNC type) input and loopthrough output
Resolution	1080p, 1080i, 720p and below
Video encoder	h.265 (HEVC) or h.264 (AVC) or MJPEG
Audio encoder	AAC, AAC++, MP3, MPEG1Layer2, AC-3 stereo compatible
Audio Bit-rate:	Bit-rate: 32k/48k/96k/128k/160k/192k, Data-rate: 64 kbps-384 kbps
SYSTEM	
Data interface	RJ45, 1000BaseT Ethernet interface, management by web browser
Protocol	HTTP, RTSP, RTMPs, UDP/RTP, FLV, HLS ; unicast/multicast, SRT P2P
Data Rate	32 kbps – 32 Mbps
Encoding bitrate process	CBR or VBR
SMPTE 425	Support Level A & B
GOP Structure	IBBP
ONVIF 2.x	Supported by RTSP: G711A
Picture adjust	De-interlacing, Noise reduction, Sharpening
OSD	4 Logo and Text Insertion as transparent overlays possible
Power supply	12V DC, 1A
Dimensions	165x85x24mm
Weight	0.5 kg
Consumption	5W