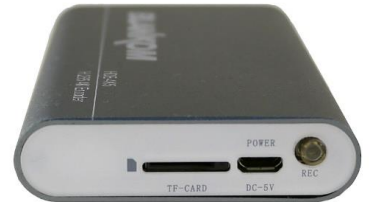


Encoder & IPTV Streamer with HDMI Input



h.265 and h.264 4K UHD encoder & IP streamer combined

- ✓ HDMI input for encoding and recording to SD Card
- ✓ Stereo Audio embedded or external Input (3.5mm stereo)
- ✓ HD Resolution 2160p30, 1080p, 1080i, 720p. ...
- ✓ IP output: RTSP, RTMP, UDP/RTP, HTTP, HLS, FLV
- ✓ Distribution of Video Camera U(HD) and other sources content over LAN, WAN or internet.
- ✓ 2 simultaneous and independent Live stream broadcast encoder engines to multiple destinations
- ✓ Video-over IP applications
- ✓ IPTV/OTT applications
- ✓ Video conferencing, Camera streaming
- ✓ IPTV on LAN applications, Corporate IPTV for Broadcastings
- ✓ HD and SD video encoding (incl. 1080p)
- ✓ Corresponding product: BLANKOM IPTV-STB 7500+ (UHD)

BLANKOM HDE-4K5 encoder serves the distribution of SD/HD and UHD TV/video content through IP networks in digital quality.

The live video can be received by Internet media server by TV sets with IPTV Set-Top Boxes, on PC's and tablets with VLC Player.

BLANKOM HDE-4K5

IPTV encoder is designed for TV signal distribution in excellent quality over LAN and INTERNET.

The h.264 and h.265 (HEVC) compression technology features low-latency and low bit rates for IPTV/OTT systems. The high-efficient encoding chips saves bandwidth cost through all its resolution range.

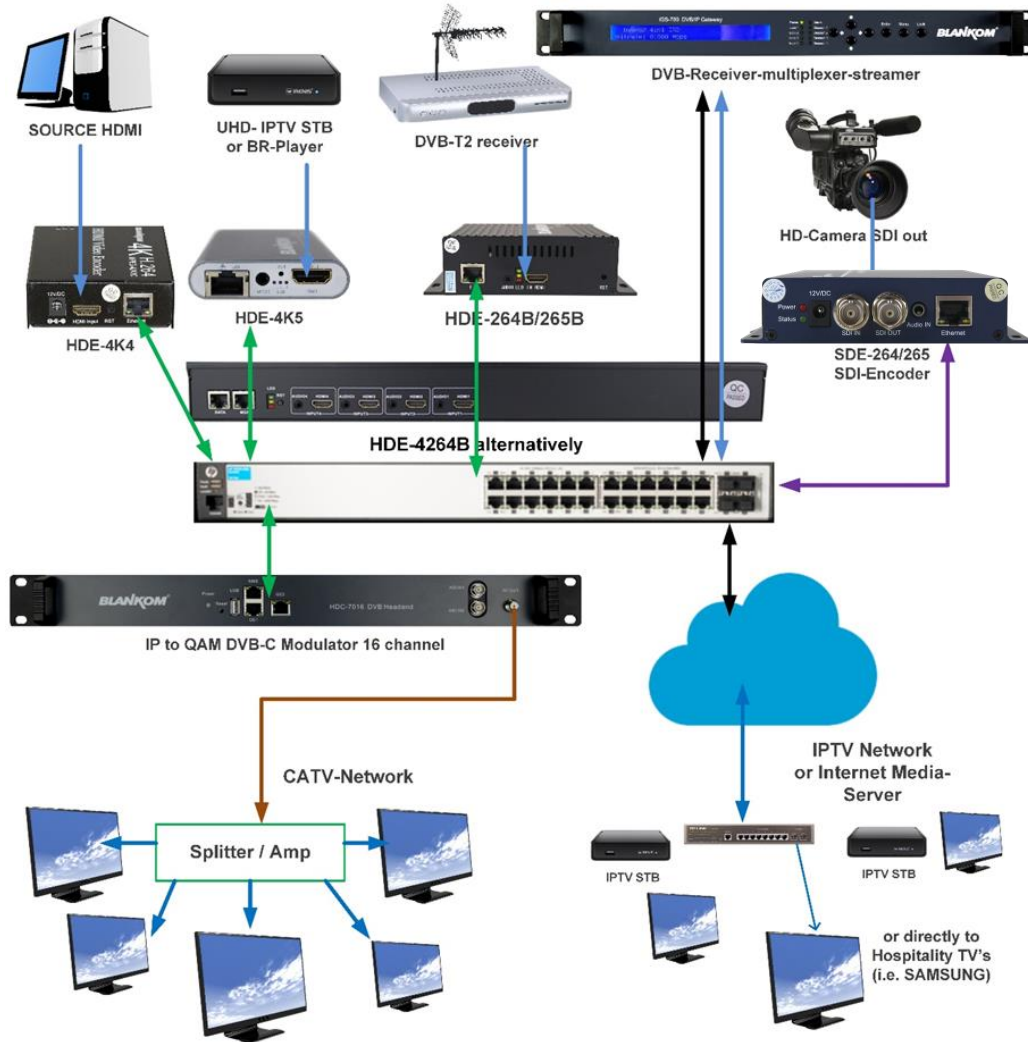
Distribution of SD up to UHD TV channels through the IPTV/OTT network using state-of-art IP technology from almost any kind of video input.

Excellent video and audio quality.

High reliability. No regular service and maintenance need during operation.

Application Example

Multiple Encodings to IPTV and CATV



Function	H.265 (HEVC) and H.264 Encoder and IP Streamer
INPUT	HDMI input
Resolution	2160p30, 1080p, 1080i, 720p and below
Audio	Embedded from HDMI signal or optional Stereo Input by 3.5mm jack
Video encoder	H.265 (HEVC) or H.264 (AVC)
Audio encoder	AAC, MP3
Audio Bit-rate:	Bit-rate: 32k/48k/96k/128k/160k/192k, Data-rate: 64 kbps-384 kbps
SYSTEM	2 independent output streams (Main and secondary)
Data interface	RJ45, 1000Mb/s Ethernet interface, management by web browser
Protocol	HTTP, RTSP, RTMP, UDP/RTP, FLV, HLS ; unicast/multicast
Data Rate	32 kbps – 32 Mbps (dep. on sampling rate chosen)
Encoding bitrate	CBR/VBR
ONVIF	Supported by RTSP: G711A
Picture adjust	De-interlacing, Noise reduction, Sharpening, Filter
OSD	4 Logo and Text Insertion as transparent overlay
Recording	To Micro-SD-Card (high speed recommended) exFAT
Power supply	12V DC, 2A
Dimensions	103 x 61 x 16mm
Weight	0.2 kg
Consumption	5W