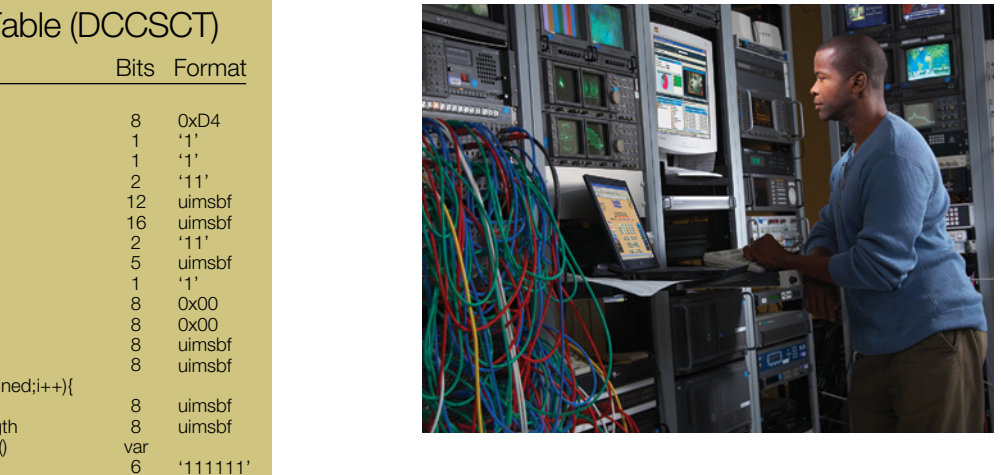
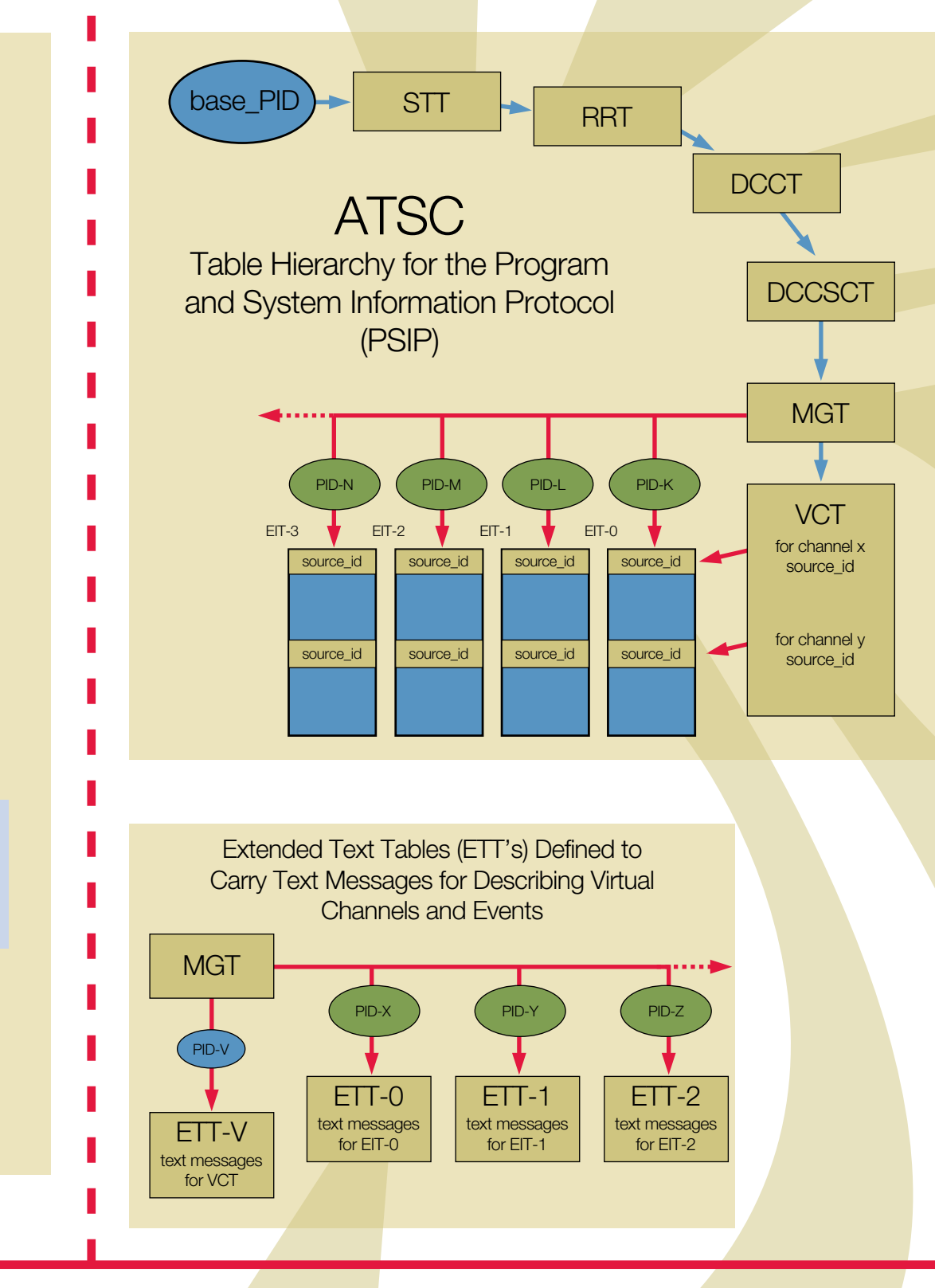
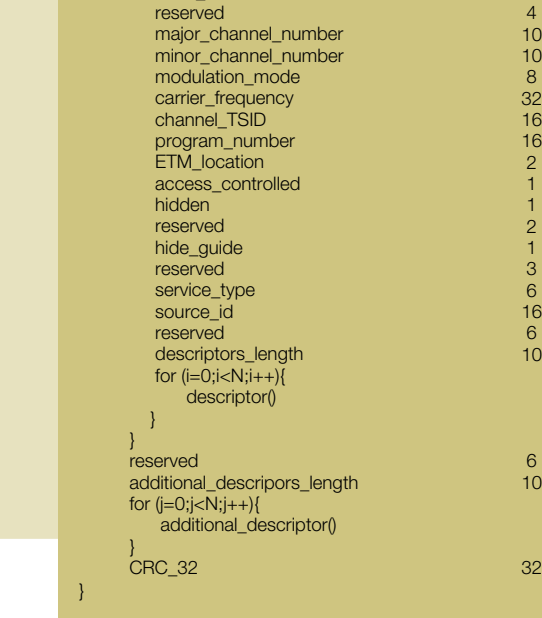
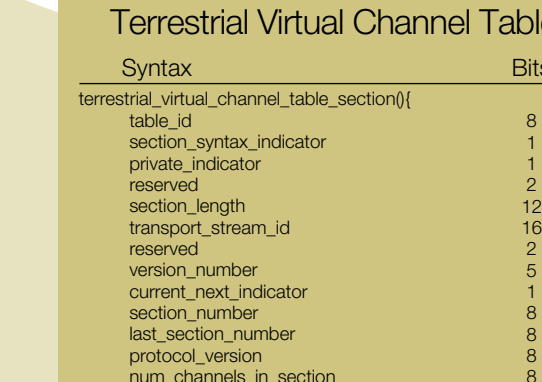


### Table Timing Intervals

Table Type	PID	Max Interval
PAT	0x0	100 ms
TSDT	0x0	100 ms
MGT	0xFFB	150 ms
TVCT	0xFFB	400 ms
CVCT	0xFFB	400 ms
STT	0xFFB	1000 ms
RRT	0xFFB	6000 ms
PMT	ALL	400 ms
EIT0	ALL	500 ms
EIT1	ALL	3000 ms
EIT2-3	ALL	6000 ms

### Stream Type Assignments

Value	Description
0x00	ITU-T ISO/IEC reserved
0x01-0x07	As specified in Table 2.29 (Stream type assignments) of ISO/IEC 13818-1
0x08	Used in other systems
0x081	ATSC A/53 audio
0xB2-0xB4	Used in other systems
0xB5	LPID (ATSC A/67 Program/Episode/Version Identifier)
0xB6-0xBF	Reserved
0xC0-0xCF	User Private



### Abbreviations

ATSC	Advanced Television Systems Committee
BMP	Basic Multilingual Plane
bsfif	bit serial, left bit first
CAT	Conditional Access Table
CRC	Cyclic Redundancy Check
CVCT	Cable Virtual Channel Table
DTV	Digital Television
ET	Event Information Table
EPG	Electronic Program Guide
EMM	Entertainment Management Message
ETM	Extended Text Message
ETT	Extended Text Table
GPS	Global Positioning System
MGT	Master Guide Table
MPPAA	Motion Picture Association of America
MPEG	Moving Picture Experts Group
NT	Network Information Table
NVOD	Near Video On Demand
OoB	Out of Band
PAT	Program Association Table
PCR	Program Clock Reference
PES	Packaged Elementary Stream
PID	Packet Identifier
PMP	Program Map Table
PICT	Physical Transmission Channel
SC	Society of Cable Telecommunications Engineers
SI	System Information
SMPTEx10M	Synchronous Serial Interface for MPEG-2 transport streams at 10, 30/65 and 38, 78/837 Mbps
STD	System Target Decoder
STT	System Time Table
rpfcof	remainder polynomial coefficients, highest order first
RRT	Rating Region Table
TS	Transport Stream
TSDT	Transport Stream Description Table
TVCT	Terrestrial Virtual Channel Table
unicode	Unicode™
UTC	Coordinated Universal Time
umstrif	unsigned integer, most significant bit first
VCT	Virtual Channel Table. Used in reference to either TVCT or CVCT

### Table ID Ranges and Values

Table ID Value (hex)	Tables	PID
0x00	<b>ISO/IEC 13818-1 Sections:</b> PROGRAM ASSOCIATION TABLE (PAT)	0
0x01	CONDITIONAL ACCESS TABLE (CAT)	1
0x02	TS PROGRAM MAP TABLE (PMT)	per PAT
0x03-0x0F	ISO Reserved	
0x10-0x1F	<b>User Private Sections:</b> (User Private)	
0x20-0x2F	<b>Other Documents:</b> ATSC coordinated values which are defined in other standards	
0x30	<b>PSIP Tables:</b> MASTER GUIDE TABLE (MGT)	0xFFFB
0x31	TERRESTRIAL VIRTUAL CHANNEL TABLE (TVCT)	0xFFFB
0x32	CABLE VIRTUAL CHANNEL TABLE (CVCT)	0xFFFB
0x33	RATING REGION TABLE (RRT)	0xFFB
0x34	EVENT INFORMATION TABLE (EIT)	per MGT
0x35	EXTENDED TEXT TABLE (ETT)	per MGT
0x36	SYSTEM TIME TABLE (STT)	0xFFB
0x37-0x3F	ATSC coordinated values which are defined in other standards	
0x40	DIRECTED CHANNEL CHANGE TABLE (DCCT)	0xFFB
0x41	SELECTED CHANNEL CHANGE TABLE (DCCSCT)	0xFFB
0x42-0x4F	Used in other systems	
0x50-0x5F	Reserved for future ATSC use	
0x60-0x6F	Reserved for future ATSC use	
0x70-0x7F	Reserved for future ATSC use	
0x80-0x8F	Reserved for future ATSC use	
0x90-0x9F	Reserved for future ATSC use	
0xA0-0xAF	Reserved for future ATSC use	
0xB0-0xBF	Reserved for future ATSC use	
0xC0-0xCF	Reserved for future ATSC use	
0xD0-0xDF	Reserved for future ATSC use	
0xE0-0xEF	Reserved for future ATSC use	
0xF0-0xFF	Reserved for future ATSC use	